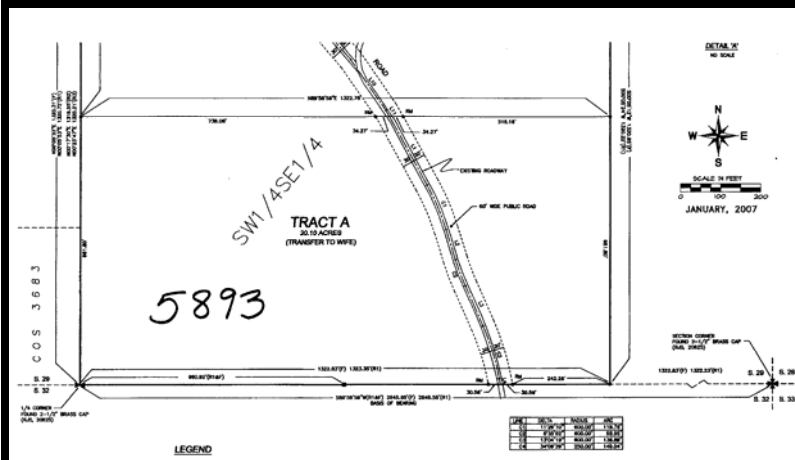


# RIDE OUT TO HOLLAND LAKE & USFS BOB MARSHALL TRAILS

At the end of Hultman Road & through USFS  
Lies these 20 acres featuring a lush meadow  
For your horses/stock or local wildlife.

Scenic timbered & elevated building sites  
Snug up along the USFS neighbor !



Holland Lake near  
with  
USFS trails into  
The Bob Marshall  
Wilderness  
20 ACRES  
\$298,000.

Please note: The data contained herein was obtained from the owner and other reliable sources deemed reliable, but is not guaranteed. Prospective buyers are advised to check the facts to their own satisfaction.



## SWAN RIVER VALLEY REAL ESTATE

7217 HWY 83 N (Located in the Mission Mountains Mercantile Building)  
P.O. Box 1111 SWAN VALLEY, Condon, Montana 59826



**Len Kobylenski, Broker - Swan Valley**  
Phone 406.754.2233 Fax 406.754.2826  
Residential - Recreational - Investment

Website: [swanvalley.com](http://swanvalley.com) Email: [len@swanvalley.com](mailto:len@swanvalley.com)