

SWAN RIVER - PONDS SWAN & MISSION VIEWS

**\$375,000.
21.313 AC**

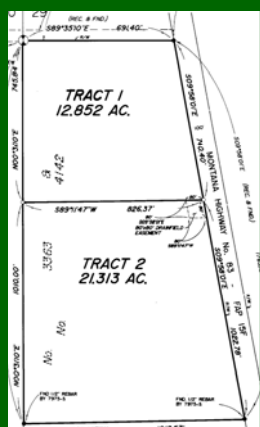
SWAN VALLEY

Close to HOLLAND LAKE and trailheads for access into both the BOB MARSHALL & MISSION MOUNTAINS WILDERNESS areas

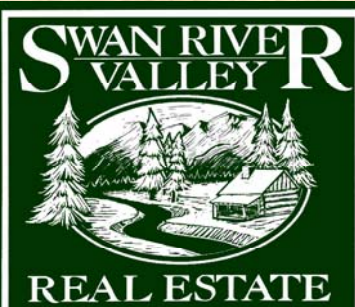
TRACT 2 - the 21+ acres features River, Pond & gently sloped Swan River access.

Located just south of TRACT 1 which is also available! 12.8+ acres @ \$150,000.

Bring your fly rod !



Please note: The data contained herein was obtained from the owner and other reliable sources deemed reliable, but is not guaranteed. Prospective buyers are advised to check the facts to their own satisfaction.



SWAN RIVER VALLEY REAL ESTATE

7217 HWY 83 N (Located in the Mission Mountains Mercantile Building)
P.O. Box 1111 SWAN VALLEY, Condon, Montana 59826



REALTOR
MLS

Broker : Len Kobylenski - Swan Valley Office
Phone 406.754.2233 Fax 406.754.2826

Website: swanvalley.com Email: len@swanvalley.com